

PREFERRED SERIES



Rev: 11.11.25



Structural Features

- R 30 Batt Insulation in Ceilings
- R-19 Insulation in Walls
- Wind Zone 115 VULT
- OSB Floor Decking 23/32"
- (2 X 10) Floor Joist 16" OC
- (2 X 6) 8' Sidewalls 16" OC
- (2 X 6) Top & Bottom Plates
- (2 X 4) 8' Double Marriage Walls
- Engineered Roof Systems
- 7/12 Roof Pitch 24" OC on Ranch Models
- 10/12 24" OC Std on 5628D and 6028K models.

Plumbing

- Water Shut-Off Valves
- Pex Plumbing System
- 50 Gallon Water Heater
- Exterior Frost-Free Water Faucet (1 @ STD Location Per Plan)
- Whole House Water Shut-Off
- Washer Hook-Up
- Kitchen Pull Out Faucet

Baths

- 48" Fiberglass Shower, M/Bath (Per Plan)
- 60" Fiberglass Tub/Shower, Hall Bath
- 72" Drop-In Tub M/Bath (Per Plan)
- 6" Ceramic Backsplash on Laminate Tub Platform M/Bath
- 48"x48" Window over Tub M/Bath (Per Plan)
- White Shaker Style Vanity Cabinets
- 36" High Lavatory(s) in M/Bath
- 36" High Lavatory in Bath 2
- Towel Bar/Tissue Holder All Baths
- Dual Lever Bath Faucets
- Cultured Marble Lavatories in Baths

Exterior Features

- D5 Vinyl Siding
- 15" Raised Panel Shutters or 3 1/2" Window Lineals (Front Door Side)
- 7/16" OSB Wrap Exterior Walls
- 36" 6 Panel Front Door w/No Storm
- 36" 6 Panel Rear Door w/No Storm (Per Plan)
- 12" Eave Overhangs (All Sides)
- Insulated Windows Gridless
- House Wrap
- Limited Lifetime Architectural Shingles

Kitchen

- S/S Dishwasher
- S/S Spacesaver Microwave
- 60/40 Stainless Steel Kitchen Sink
- Laminate Countertop w/ Full Ceramic Backsplash & Ideal Edging
- 30" Overhead Cabinets w/Matching Cove Molding
- Shaker Style Cabinets (Colors- White, Gray, Black)
- Kitchen Island White Shaker Style Cabinets with Beadboard
- Double Trash Can Base Cabinet in Island (Per Plan)
- Pot and Pan Drawer Base Cabinet in Island (Per Plan)
- Raised Wall Cabinet over Range

Flooring

- 25 oz. Carpet w/ Pad & Tack Strip (Shipped Loose)
- 6 lb. Re-Bond carpet Pad
- Congoleum Flooring in Designated Areas (Per Plan)

Interior Appointments

- 1/2" High Strength Sheetrock Ceilings w/Smooth Finish
- (2 X 4) Interior Wall Construction
- 36" Interior Doors M/Bedroom, MBR Closet & M/Bath
- Mortised Door Hinges
- 3 1/2" Crown Molding
- 6" Baseboard Molding
- 2 1/4" Window/Door Casing
- Metal Shelf over Washer/Dryer
- Finished 1/2" Sheetrock Thru-out
- Lever Interior Door Hardware
- Shoe Rack with Shirt & Skirt Shelves in Master Bedroom Closet (Per Plan)
- Laminate Top Table in Utility (Per Plan)

Electrical

- Surface Mount LED Recessed Light Ceiling Fixtures T/O
- Ceiling Fans in Bedroom 1, Living Room and Family Room per plan.
- Exterior Light (@ Exterior Doors)
- Exterior Electrical Outlet (@ Exterior Doors)
- 200 AMP Panel Box
- Smoke Detector Systems
- Dryer Hook-up with recessed exhaust box
- 110V Outlet Receptacle in Utility Room Storage Closet (Per Plan)
- 1 1/4" Conduit Running Down from Electrical Panel Box for Future Use

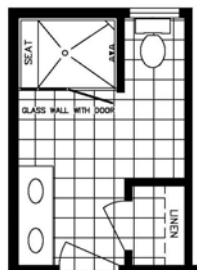
Available Options Per Plan

- Alternate Master Bath Plans
- Vent-less Gas Fireplace w/ TV Niche Bookcase Cabinetry
- Farmhouse Exterior Package
- Farmhouse Interior Package
- Vinyl Plank Flooring
- 150 VULT Wind Zone
- 10/12 Roof Pitch 24" OC (where available)
- 9' Sidewalls (Incls 36" Overhead Cabinets in Kitchen)
- 16" OC Roof Trusses
- 30" Smooth Top S/S Range
- 25 CF Side by Side Refrigerator S/S w/Icemaker.
- Sliding Glass Door(s)
- (2) Pendant lights w/ Separate Switch over Kitchen Island
- Congoleum Vinyl Floor ILO Carpet in Family Room
- Brace and Switch for Ceiling Fans-Additonal

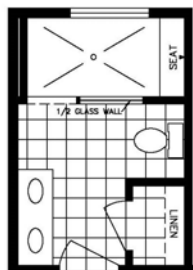
Preferred Series by Holmes Building Systems



Elevation Shown with Optional and On-Site Builder Supplied Items. Consult Your Builder for Pricing.



OPT #1 MASTER BATH



OPT #2 MASTER BATH



Torrey Pines

Model 5628A HBSP R

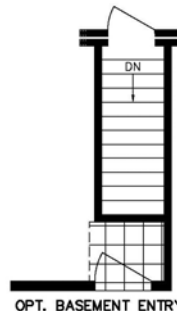
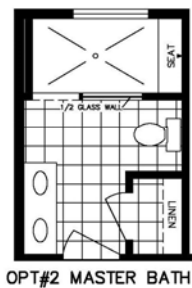
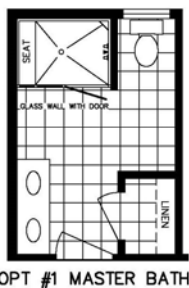
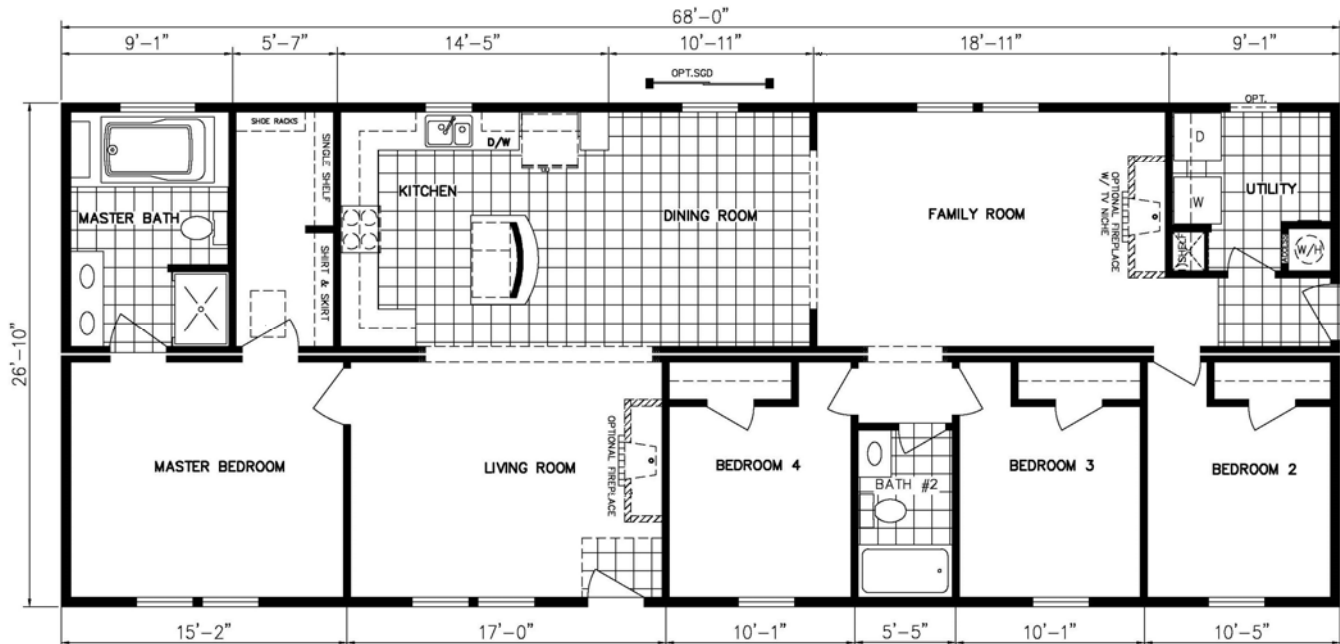
Approx. 1476 Sq.Ft. (Includes Porch)



Preferred Series *By Holmes Building Systems*



Elevation Shown with Optional and On-Site Builder Supplied Items. Consult Your Builder for Pricing.



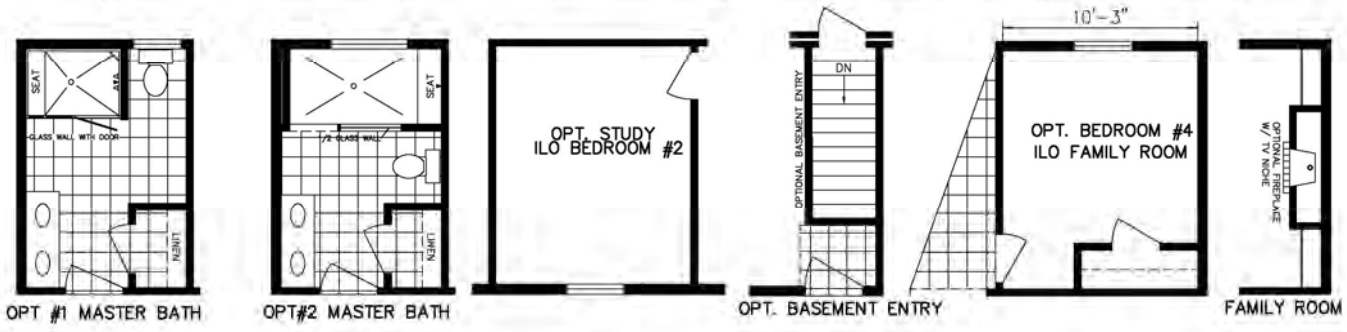
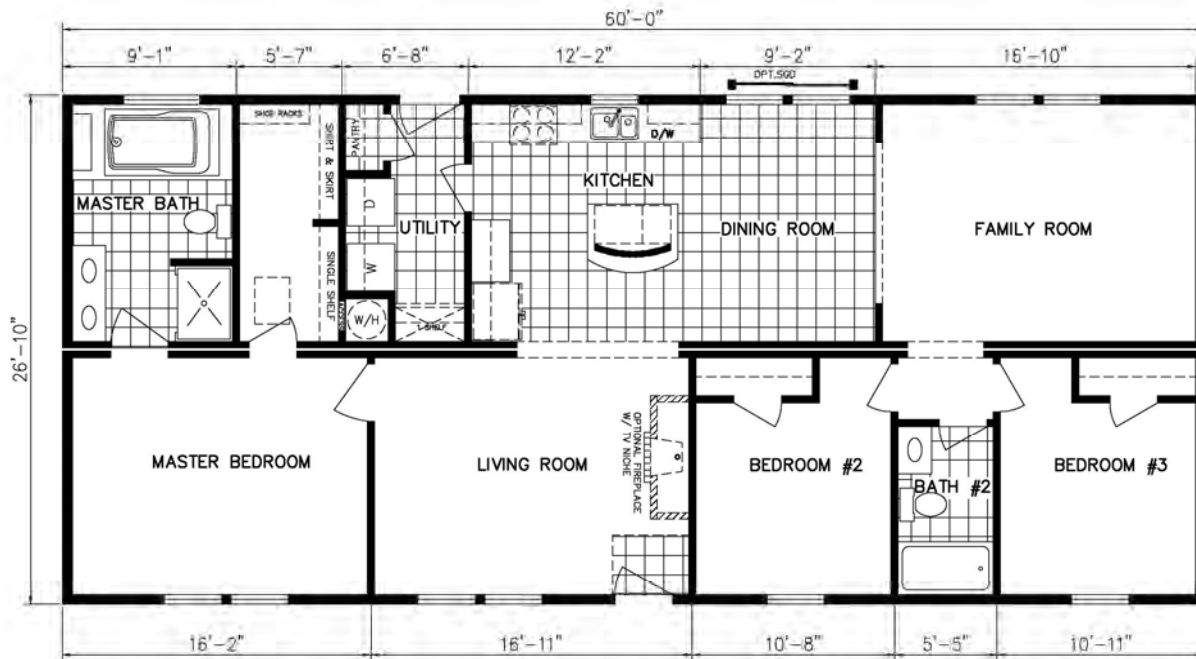
Oakmont
 Model 6828B HBSP R
 Approx. 1824 Sq.Ft.



Preferred Series by Holmes Building Systems



Elevation Shown with Optional and On-Site Builder Supplied Items. Consult Your Builder for Pricing.



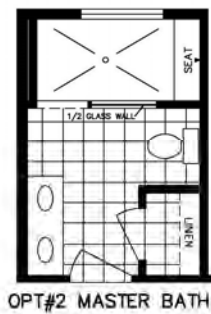
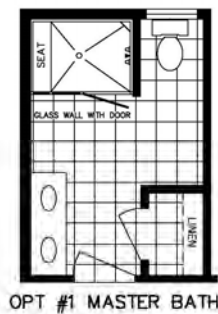
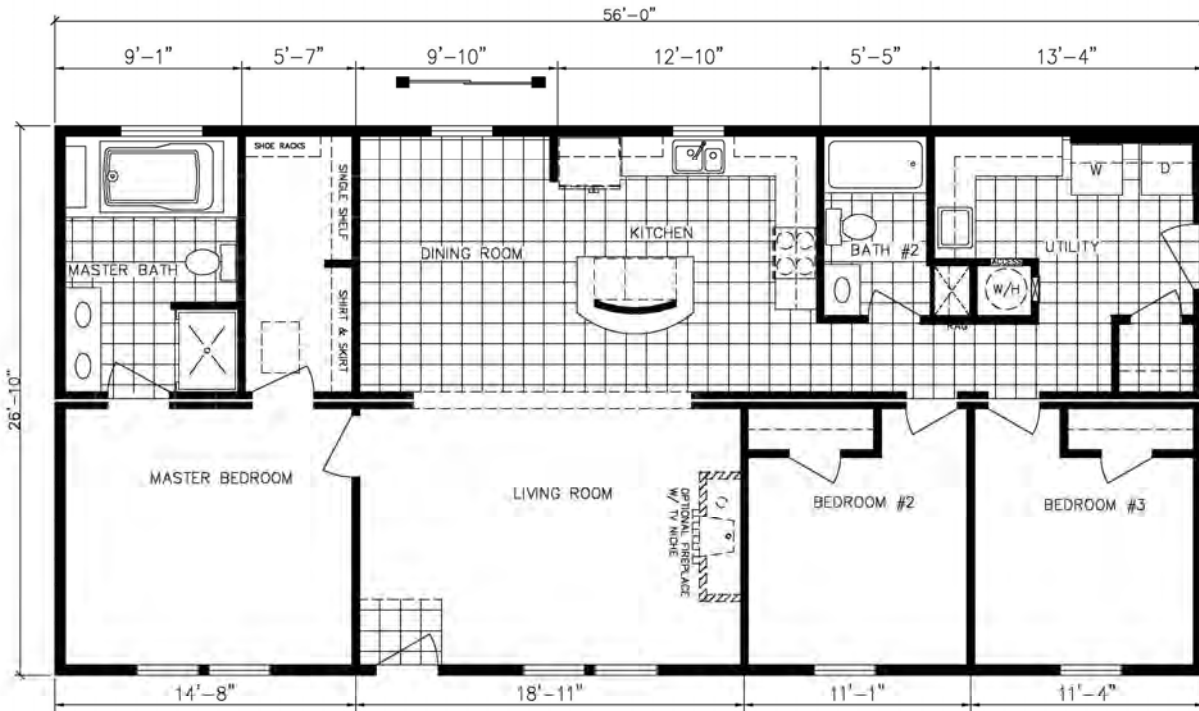
Pebble Beach
 Model 6028H HBSP R
 Approx. 1610 Sq.Ft.



Preferred Series by Holmes Building Systems



Elevation Shown with Optional and On-Site Builder Supplied Items. Consult Your Builder for Pricing.

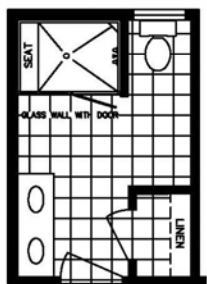
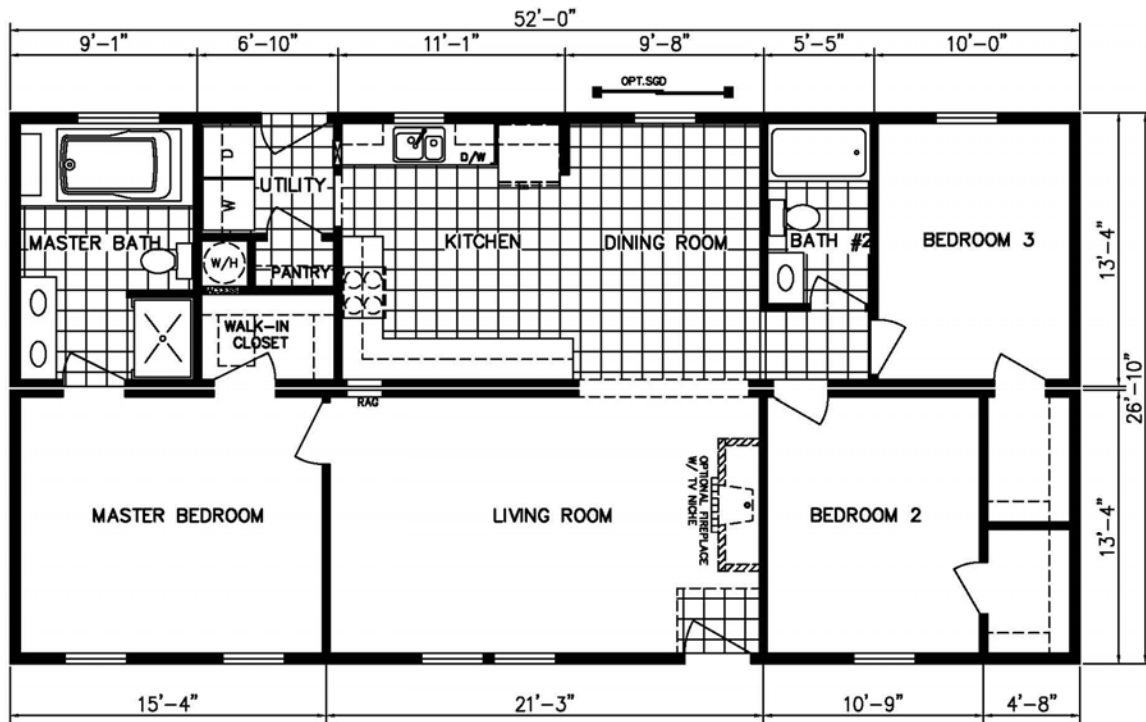


Shadow Creek

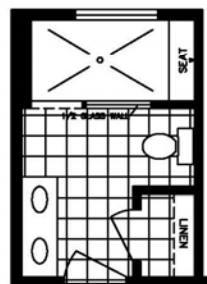
Model 5628C HBSP R

Approx. 1503 Sq.Ft.

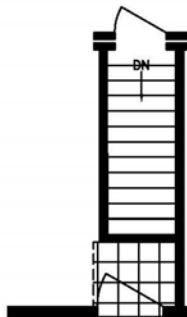
Preferred Series *by Holmes Building Systems*



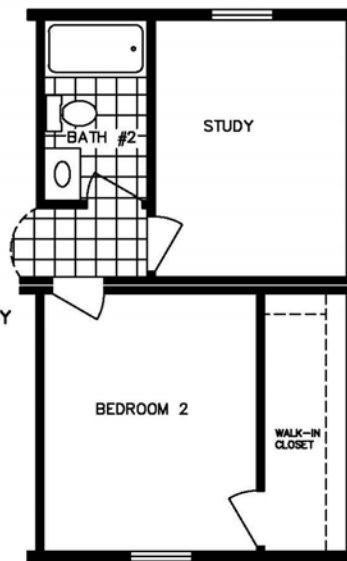
OPT #1 MASTER BATH



OPT #2 MASTER BATH



OPT. BASEMENT ENTRY



OPT. STUDY



Elevation Shown with Optional and On-Site Builder Supplied Items. Consult Your Builder for Pricing.

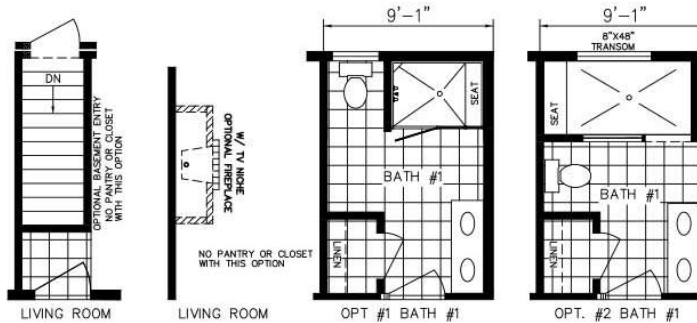
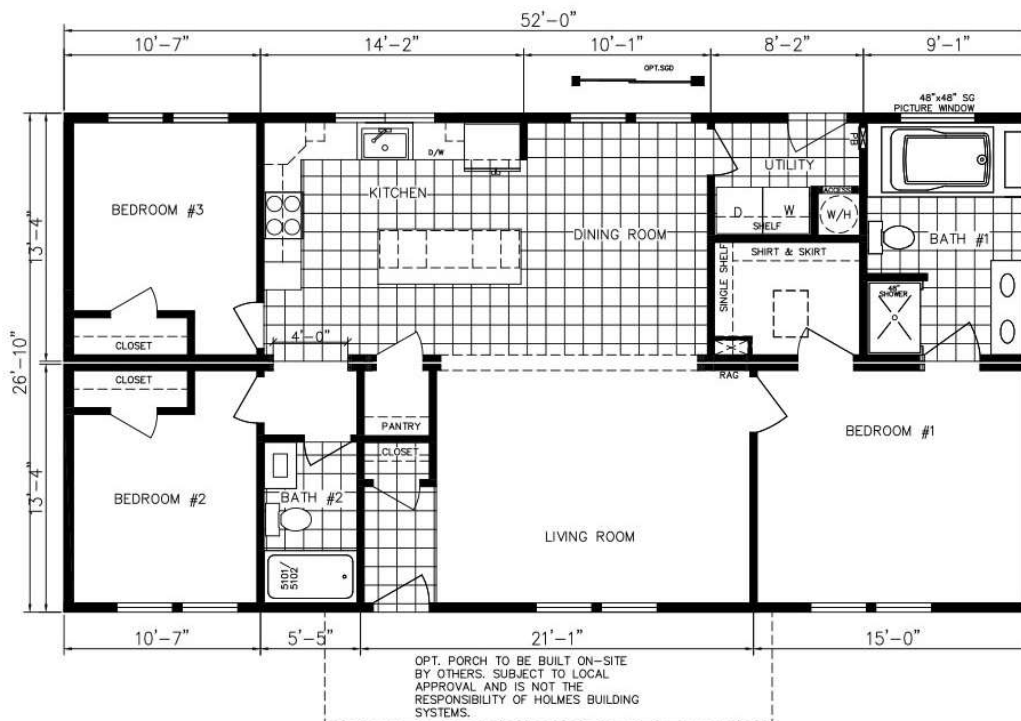


Somerset Hills

Model 5228D HBSP R

Approx. 1395 Sq.Ft.

Preferred Series *by Holmes Building Systems*



Elevation Shown with Optional and On-Site Builder Supplied Items. Consult Your Builder for Pricing.

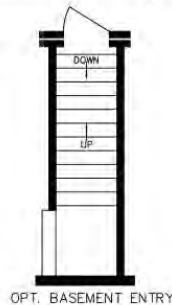
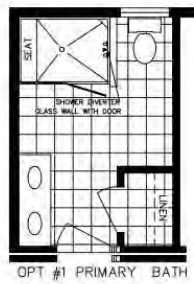
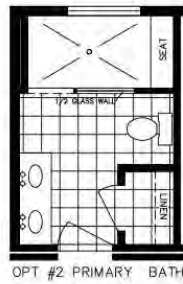
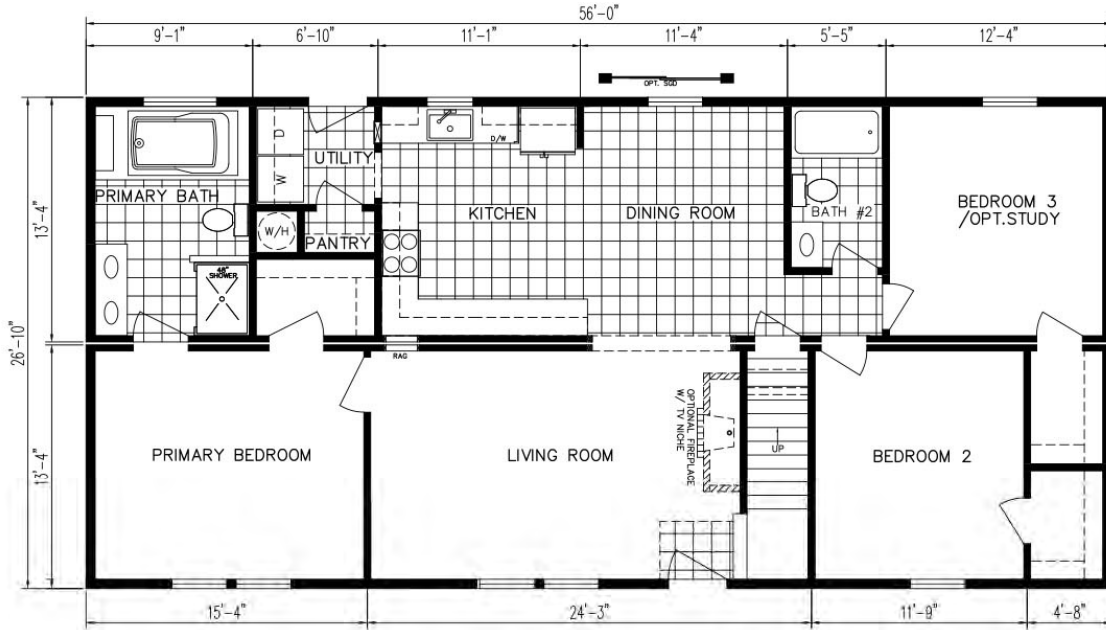
Suncrest Ridge

Model 5228E HBSP R

Approx. 1395 Sq.Ft.



Preferred Series by Holmes Building Systems



Elevation Shown with Optional and On-Site Builder Supplied Items. Consult Your Builder for Pricing.



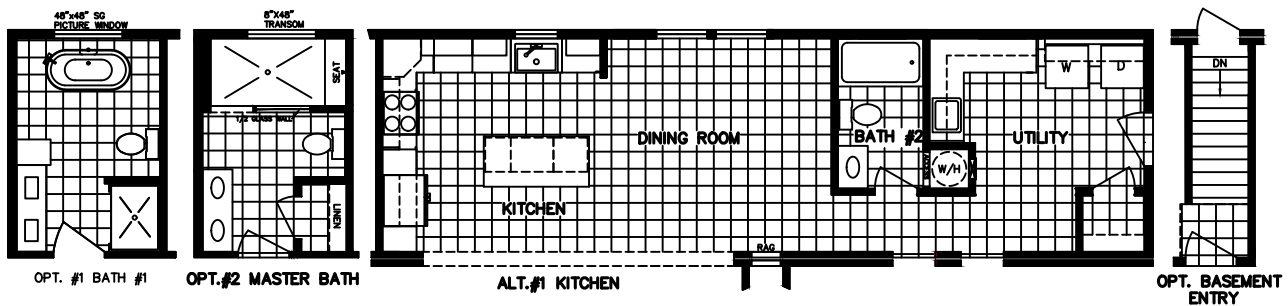
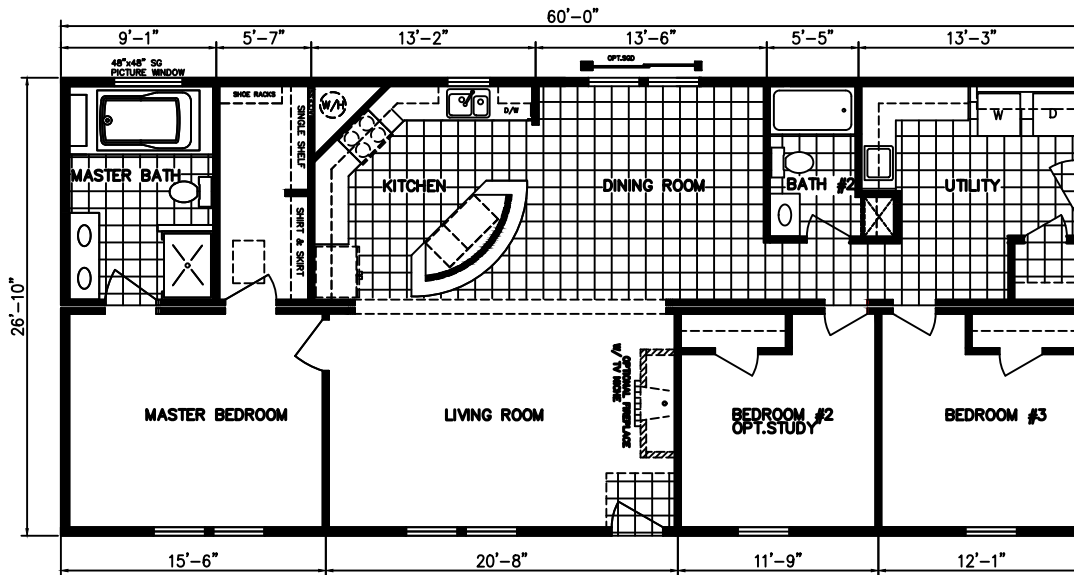
Diamond Creek

HBSP 5628D BR
Approx. 1503 SqFt

Preferred Series by Holmes Building Systems



Elevation Shown with Optional and On-Site Builder Supplied Items. Consult Your Builder for Pricing.



AUGUSTA
UPDATED OCTOBER 2025

Augusta

Model 6028L HBSP R

Approx. 1610 Sq.Ft.



Preferred Series by Holmes Building Systems



Elevation Shown with Optional and On-Site Builder Supplied Items. Consult Your Builder for Pricing.



Cypress Point

Model 6828A HBSP R

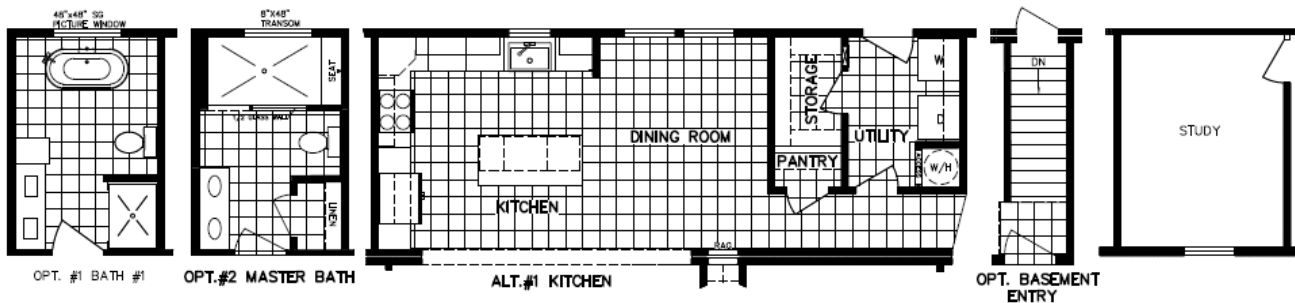
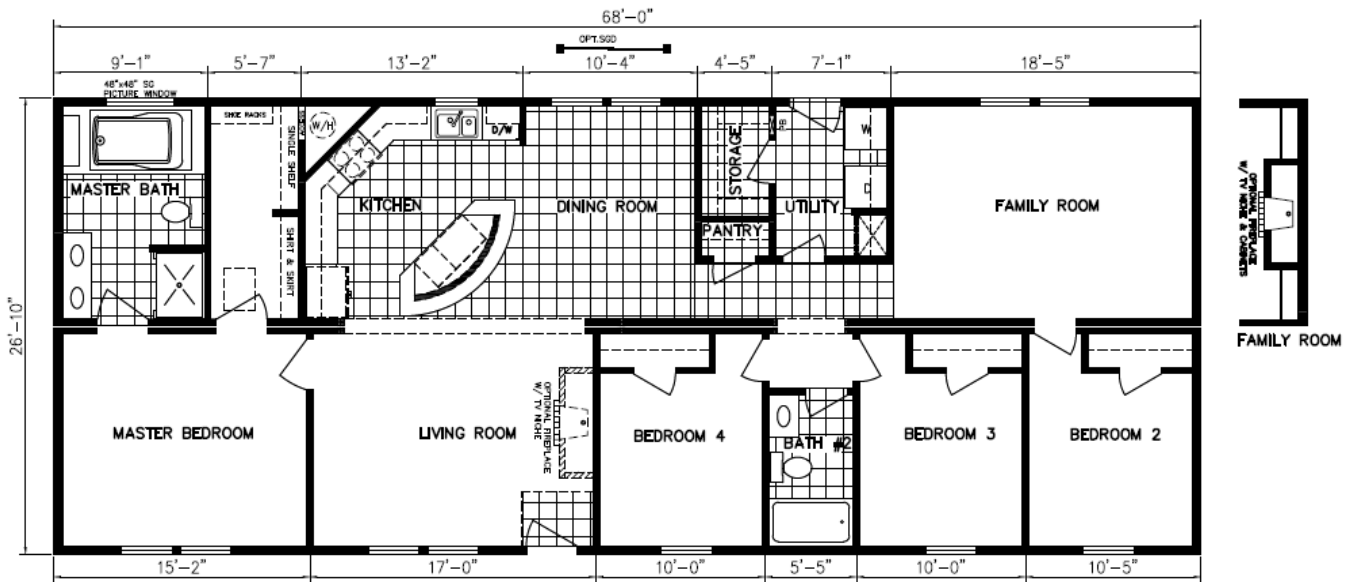
Approx. 1824 Sq.Ft.



Preferred Series By Holmes Building Systems



Elevation Shown with Optional and On-Site Builder Supplied Items. Consult Your Builder for Pricing.



Cypress Point Version 2

Model 6828C HBSP R

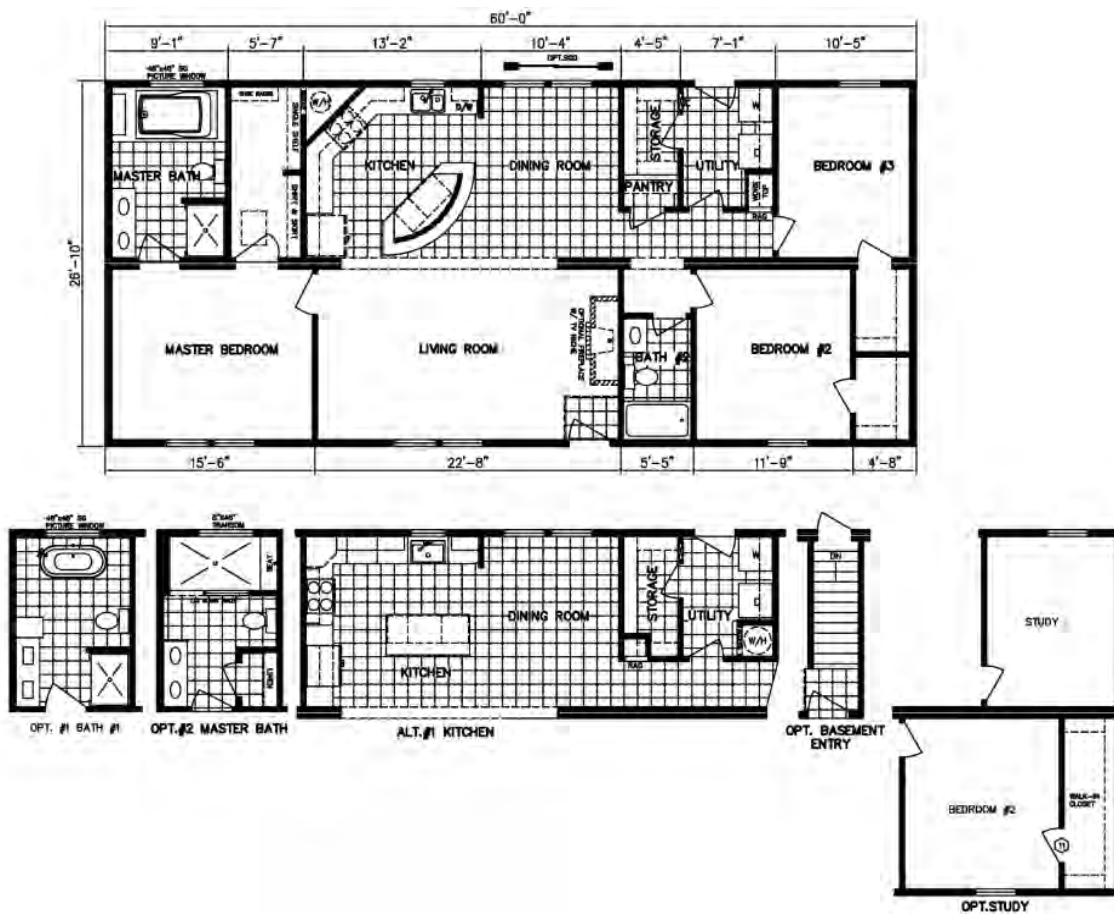
Approx. 1824 Sq.Ft.



Preferred Series by Holmes Building Systems



Elevation Shown with Optional and On-Site Builder Supplied Items. Consult Your Builder for Pricing.



Cypress Point Version 3

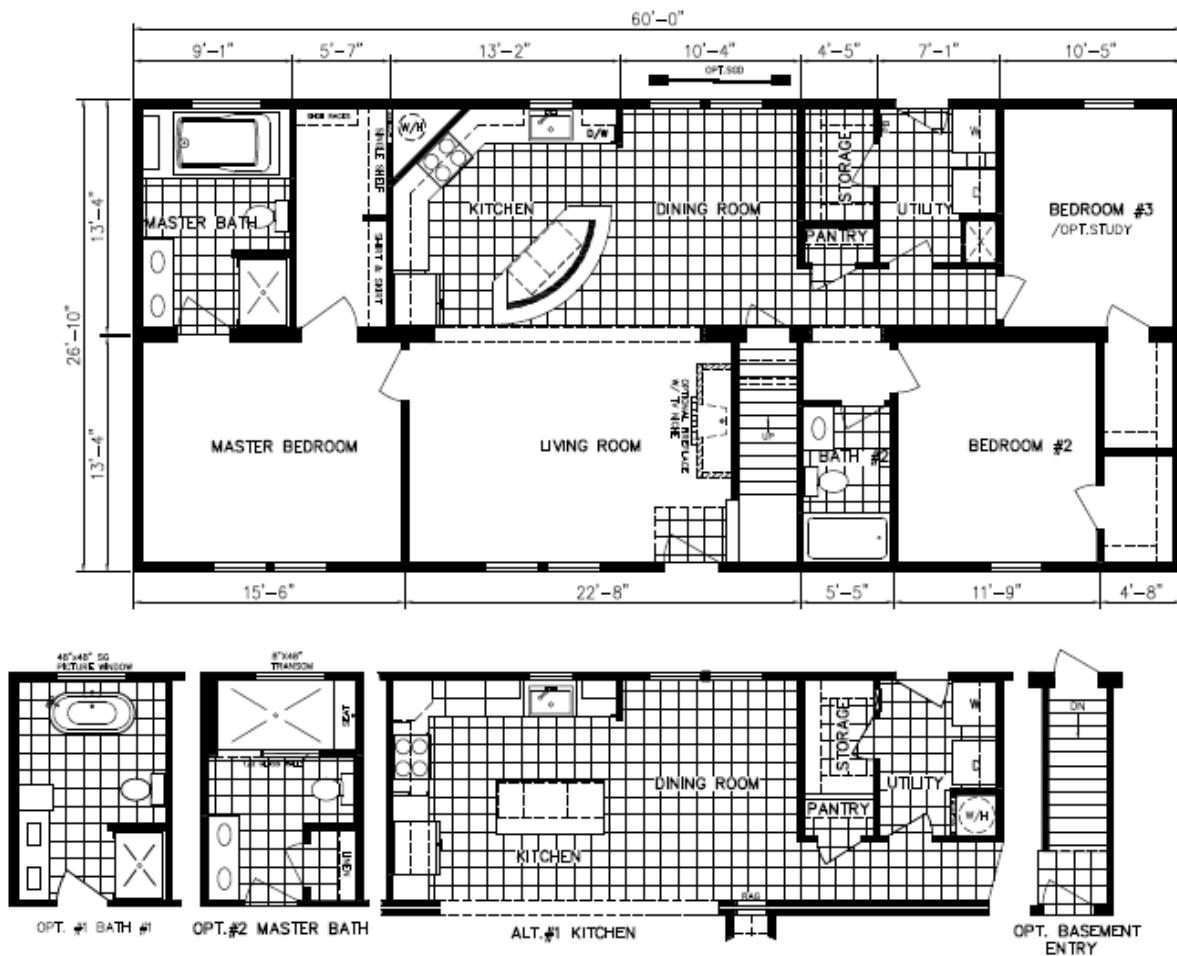
Model 6028J HBSP R
Approx. 1610 Sq.Ft.



Preferred Series by Holmes Building Systems



Elevation Shown with Optional and On-Site Builder Supplied Items. Consult Your Builder for Pricing.



Double Eagle

Model 6028K HBSP R

Approx. 1610 Sq.Ft.

Preferred Series by Holmes Building Systems

Highlighted Interior Standards

Stainless Steel Kitchen Appliances



64/40 Stainless Steel Kitchen Sink



Raised Wall Cabinet Over Range



Laminate Kitchen Countertop with Ideal Edging and Full Ceramic Backsplash



Double Trash Can Base Cabinet & Pot and Pan Drawer Base Cabinet



Ideal Edge



Shoe Rack with Shirt & Skirt Shelves in Master Bedroom Closet



Preferred Series by Holmes Building Systems

Highlighted Interior Standards

Nickel T-Bar Cabinet Pulls

White Square Bowl Cultured Marble Bath Vanities



48" Fiberglass Shower per plan



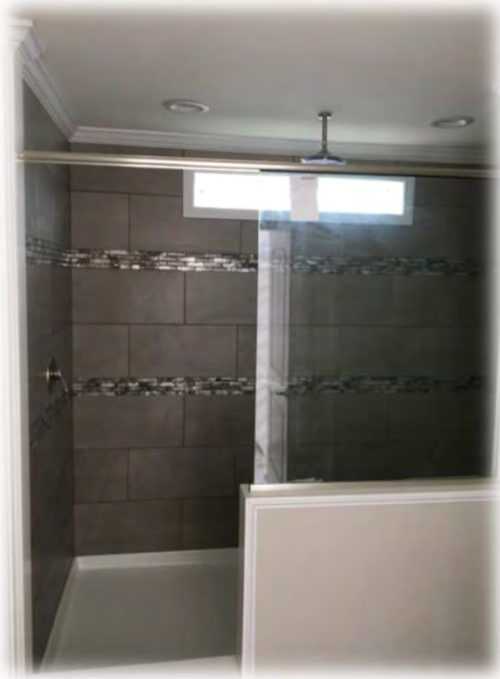
Hall Bath 60"
Fiberglass
Tub/Shower



Preferred Series by Holmes

Popular Options Available per Plan

8' Ceramic Shower in Optional Master Bath w/ Two Shower Heads & Transom Window



60" x 43" One Piece Fiberglass Tiled Shower Unit with Bench Seat and Glass Door



Preferred Series Décor Choices

Shaker Style Kitchen & Bath Cabinets

WHITE



GRAY



BLACK RAVEN



FARRO



CASTLETON



STORM



Door &
Drawer
Cabinet
Hardware

Preferred Series Décor Choices

Laminate Countertop with Ideal Edging

Calcutta Marble - 3460



Fantasy Marble - 9302



Antique Mascarello - 3466



Laminate Ideal Edge

Upgrade Quartz Countertops

Cloud Super Jumbo



Modern Grey



Columbian Grey

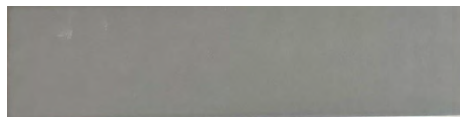


Kitchen Backsplash

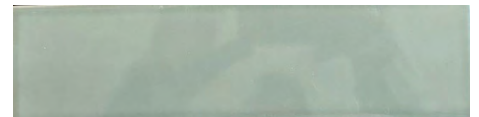
Triumphant Taupe Gloss



Dark Grey Silk



Envy Green Gloss



White



Preferred Series Décor Choices

Ceramic Shower Tile 12"x 24"

White



Gray



Congoleum Vinyl Flooring



**LX 275 Barn Wood
Vintage White**



**LX 277 Barn Wood
Greige**

Vinyl Plank Flooring



154 Almond Oak



5091 Lighthouse



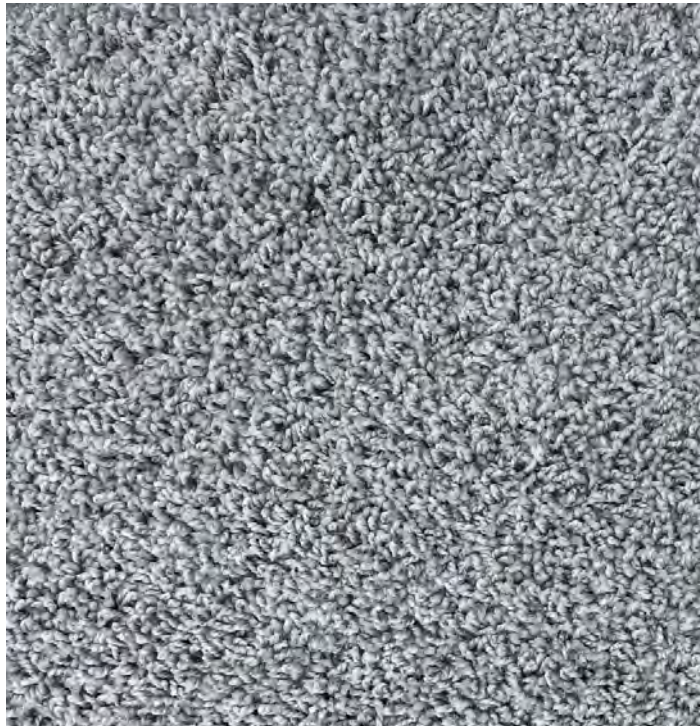
556 Smoky Oak

Preferred Series Décor Choices

25 oz Carpet

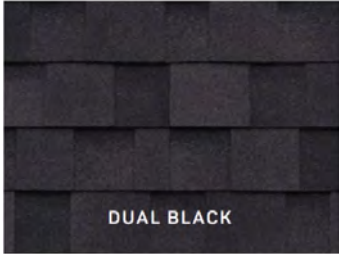
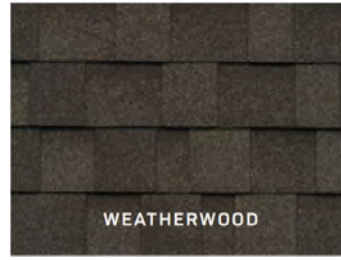
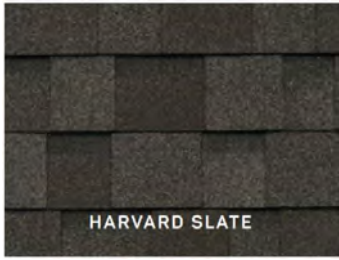


TAN



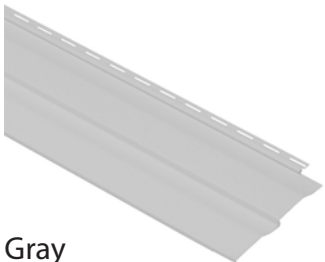
GRAY

Preferred Series Décor Choices

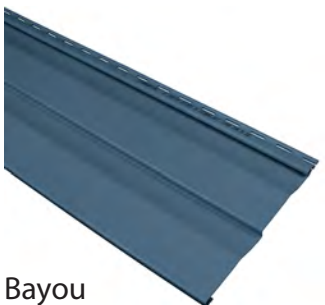


Limited Lifetime Warranty Architectural Shingles

Double 5 DL Vinyl Siding



Upgrade Double 4.5 DL Vinyl Siding



* Some items shown and listed are optional. All items and options not available on all models. Please check with your builder for availability and pricing. © 2025 Holmes Building Systems, LLC

Preferred Series Décor Choices

Board and Batten Standard Colors



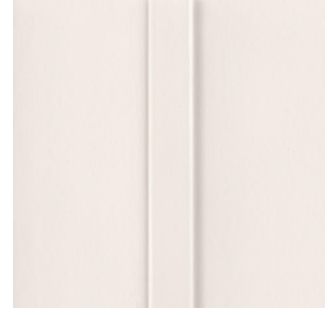
Gray



Clay



Tan



Pearl



White

Board and Batten Upgrade Colors



Hampton



Sagebrook

Vinyl Shutter Selections



Green



Brown



Blue



Black



Cranberry

* Some items shown and listed are optional. All items and options not available on all models. Please check with your builder for availability and pricing. © 2025 Holmes Building Systems, LLC

Popular Options Available per Plan



Ventless Gas Fireplace w/ TV Niche & White Bookcase Cabinetry
(Can also be ordered without cabinetry. Check with your salesman
for location and availability)

Highlighted Exterior Features

Standard Window Gridless
with 3 1/2" Lineals Front
Door Elevation



Standard Window
Gridless with Shutters
Front Door Elevation





Your approved Holmes Building Systems Home Builder:



Holmes Building Systems, LLC. 2863 Old Plank Rd. Robbins, NC 27325

www.Holmesmodular.com

The floor plans & elevations are for illustration purposes only. Refer to working drawings for actual dimensions. © 2024 Holmes Building Systems, LLC