

# Premiere Special Series by Holmes Building Systems

P

r

e

e

e

e

e

e

e

S

p

e

e

e

e

e

e



## Structural Features

- Batt Insulation in Ceilings
- R-19 Insulation in Walls
- Wind Zone 115 VULT
- OSB Floor Decking 23/32"
- (2 X 10) Floor Joist 16" OC
- (2 X 6) 9' Sidewalls 16" OC
- (2 X 6) Top & Bottom Plates
- (2 X 4) 8' Double Marriage Walls
- Engineered Roof Systems
- 7/12 Roof Pitch

## Plumbing

- Water Shut-Off Valves
- Pex Plumbing System
- 50 Gallon Water Heater
- Exterior Frost-Free Water Faucet (1 @ STD Location Per Plan)
- Whole House Water Shut-Off
- Washer Hook-Up
- Matte Black Single Handle Kitchen Spring Faucet w/ Pull Down Sprayer

## Baths

- 4x8' Ceramic Shower, Bath 1 (Per Plan)
- 8"x48" Transom Window on 4'x8' Ceramic Shower Wall (bath1 ) Per Plan
- 60" Fiberglass Tub/Shower, Hall Bath
- White Shaker Style Vanity Cabinets
- 36" High Lavatory(s) in Bath 1
- 36" High Lavatory in Bath 2
- Towel Bar/Tissue Holder All Baths
- Dual Lever Bath Faucets
- Cultured Marble Lavatories with Rectangular Bowls

## Exterior Features

- Board and Batten Vinyl Siding ( Front Door Side Only)
- 7/16" OSB Wrap Exterior Walls
- 36" Craftsman-style Front Door (w/No Storm Door)
- 36" 6 Panel Rear Door w/No Storm (Per Plan)
- 12" Eave Overhangs (All Sides)
- Black Frame Gridless Insulated Windows
- House Wrap
- Limited Lifetime Architectural Shingles

## Kitchen

- S/S Dishwasher
- SpaceSaver Microwave
- 25cf Stainless Steel Refrigerator
- Glass Top 30" Stainless Range
- Stainless Steel Farmhouse Sink
- Laminate Countertop w/ Full Shiplap Backsplash & Ideal Edging over Sink
- 30" Overhead Cabinets w/Matching Cove Molding
- Gray Shaker Style Cabinets
- Kitchen Island White Shaker Style Cabinets with Beadboard
- Double Trash Can Base Cabinet in Island (Per Plan)
- Pot and Pan Drawer Base Cabinet in Island (Per Plan)
- Subway Tile Behind Range

## Interior Appointments

- 1/2" High Strength Sheetrock Ceilings w/Smooth Finish
- (2 X 4) Interior Wall Construction
- 36" Interior Doors M/Bedroom, MBR Closet & M/Bath

- Farmhouse Package: Lights, Plumbing, Door Hardware, and Bath Fixtures in Black
- Accent Ceiling Beams Designated Areas
- Shiplap Accent Walls in Designated Areas
- 3 1/2" Craftsman Crown Molding
- 6" Craftsman Baseboard Molding
- Craftsman Style Door And Window Trim
- Metal Shelf over Washer/Dryer
- Finished 1/2" Sheetrock Thru-out
- Lever Interior Door Hardware
- Shoe Rack with Shirt & Skirt Shelves in Master Bedroom Closet (Per Plan)
- Special TV Feature Wall in Family Room

## Electrical

- Surface Mount LED Recessed Light Ceiling Fixtures T/O
- Pendant Lights over Island (2)
- Feature Wall Lights in Dining Room
- 2 Black Farmhouse Exterior Lights @ Front Door
- Exterior Electrical Outlet (@ Exterior Doors)
- 200 AMP Panel Box
- Smoke Detector Systems
- Dryer Hook-up with recessed exhaust box
- 52" Ceiling Fan in Bedroom 1
- 60" Fan in Family Room or Living Room (per plan)
- 1 1/4" Conduit Running Down from Electrical Panel Box for Future Use

## Flooring

- Vinyl Plank Flooring Throughout (shipped loose for onsite install)

## Available Options

- Free-Standing Pedestal Tub & 48" Shower
- Optional 4th Bedroom
- Sliding Glass Door in Dining Room
- 10/12 roof
- Farmhouse Style Interior Doors Available for Designated Locations
- Granite Countertops
- Fireplace Feature Wall Available in Family Room
- Optional Basement Entry
- Whole House Board and Batten (Shipped Loose)
- 15" 2-panel Shutters (front door side only. Ask your Representative for details.)
- Optional Carpet in Bedrooms



## A photograph of a red barn-style house with a dark roof, white trim, and a central entrance. The house features a gabled roof with a small dormer window. The exterior is painted red, and the trim is white. The entrance is centered and has a white door. There are windows on either side of the entrance, some with white shutters. The house is surrounded by trees and landscaping, including a large tree on the left and a gravel driveway in the foreground. The image is framed by a black border.

10'-7" 14'-10" 17'-7" 9'-1" 52'-0"

13'-4" 26'-10" 13'-4"

BEDROOM #3

CLOSET

CLOSET

BEDROOM #2

BATH #2

KITCHEN

DINING ROOM

LIVING ROOM

BEDROOM #1

UTILITY

TRANSOM

1/2 GLASS WALL

W/H

SHIRT & SKIRT

SMALL SHIRT

BEAM

5'-5" 21'-1" 15'-0" 4'-0" 46'-0"

10'-7" 5'-5" 21'-1" 15'-0" 4'-0"

OPT. PORCH TO BE BUILT ON-SITE BY OTHERS, SUBJECT TO LOCAL APPROVAL AND IS NOT THE RESPONSIBILITY OF HOLMES BUILDING SYSTEMS.

W/TV NOSE  
OPTIONAL FIREPLACE

PICTURE WINDOW

OPT. #1 BATH #1



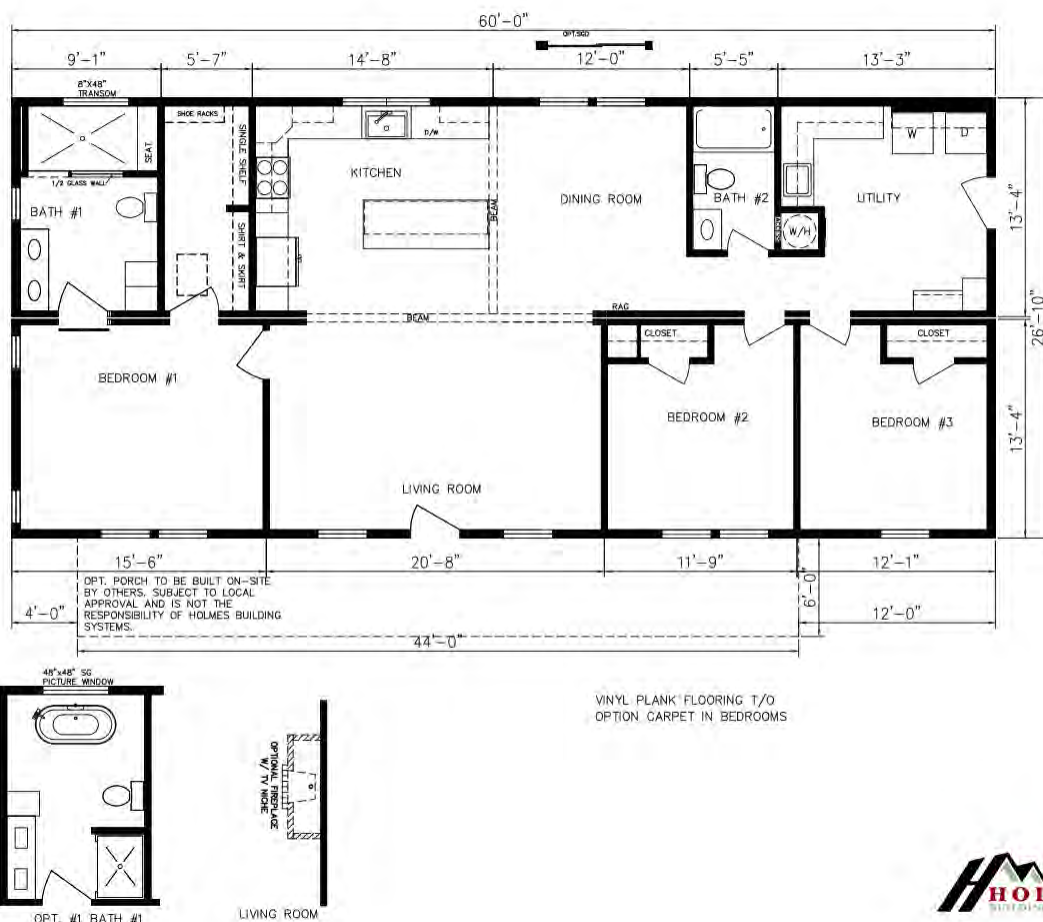
Model 5228E HBSPS R  
Approx. 1395 Sq.Ft.



# Premiere Special Series by Holmes Building Systems



Elevation Shown with Optional and On-Site Builder Supplied Items. Consult Your Builder for Pricing.



*Modern Farmhouse*

6028M HBSPS R  
Approx. 1610 Sq.Ft.





# Premiere Special Series by Holmes Building Systems



Elevation Shown with Optional and On-Site Builder Supplied Items. Consult Your Builder for Pricing.



## *Southern Farmhouse*

Model 6828D HBSPS R

Approx. 1824 Sq.Ft.



# Premiere Special Series by Holmes Building Systems

## Highlighted Interior Standards

Farmhouse Kitchen w/Stainless Steel Appliances



Ideal Edge



Dining Room Feature Wall



Luxurious Bath w/ 4x8 Ceramic Shower



Double Trash Can Base Cabinet  
& Pot and Pan Drawer Base Cabinet



Shiplap Accent Wall w/ Accent Windows  
and 60" fan



Shoe Rack with Shirt & Skirt  
Shelves in Master Bedroom Closet





# Premiere Special Series by Holmes Building Systems

## Highlighted Interior Standards

Black T-Bar Cabinet Pulls



Wooden Beams & Shiplap  
and Subway Tile Backsplash



Hall Bath 60"  
Fiberglass  
Tub/Shower



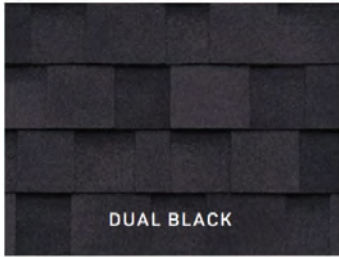
Premiere Special Exclusive Black  
Fixtures, Faucets and Mirrors



White Square Bowl Cultured Marble Bath Vanities

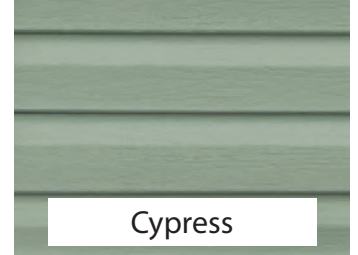
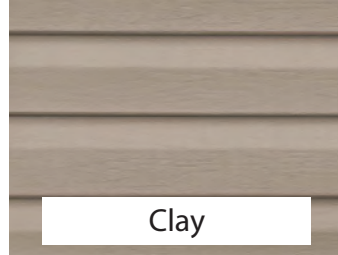
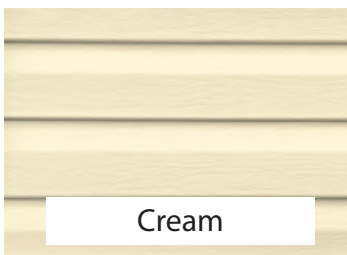


# Premiere Special Series Décor Choices



Limited Lifetime Warranty Architectural Shingles

## Double 5 DL Vinyl Siding



## Vinyl Shutter Selections



Green



Brown



Blue



Black



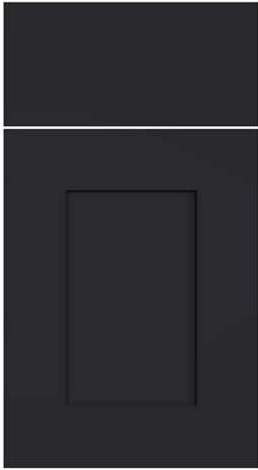
Cranberry



# Premiere Special Series

## Shaker Style Kitchen & Bath Cabinets

**BLACK RAVEN**



**WHITE**



**GRAY**



Door &  
Drawer  
Cabinet  
Hardware



Laminate Ideal Edge

### Laminate Countertop with Ideal Edging

Calcutta Marble - 3460



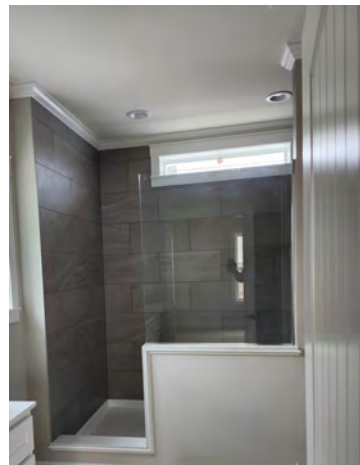
Fantasy Marble - 9302



Antique Mascarello - 3466



### Kitchen Backsplash/Ceramic Shower Accent Glass Mosaic Ceramic



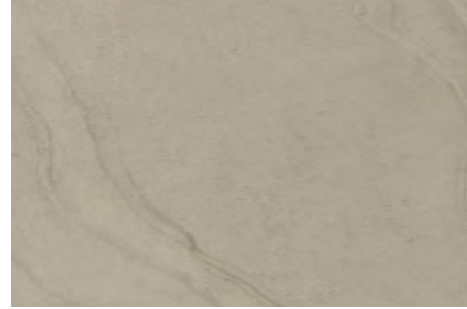
# Premiere Special Series

## Ceramic Shower Tile 12"x 24"

**White**



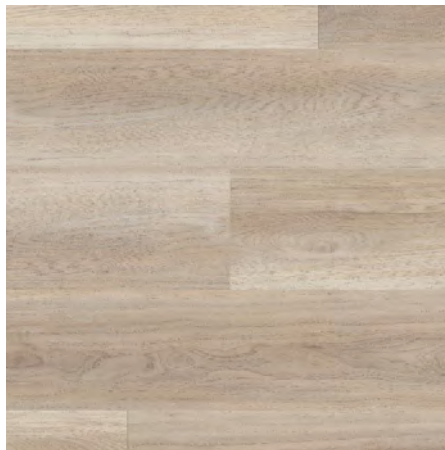
**Gray**



## Vinyl Plank Flooring



**154 Almond Oak**



**5091 Lighthouse**



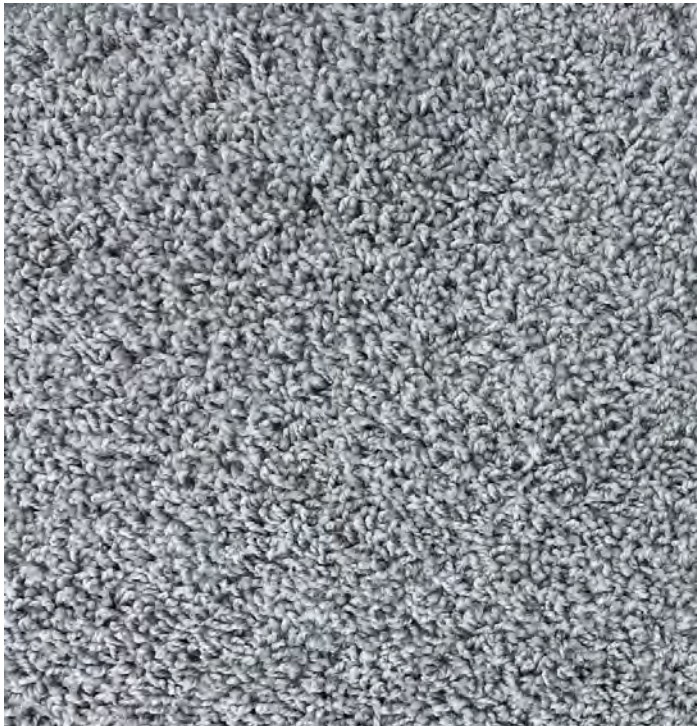
**556 Smoky Oak**



## 25 oz Carpet



**TAN**



**GRAY**





Your approved Holmes Building Systems' Home Builder:



Holmes Building Systems, LLC.  
2863 Old Plank Rd.  
Robbins, NC 28325  
910.948.2516  
[www.HOLMESMODULAR.com](http://www.HOLMESMODULAR.com)

